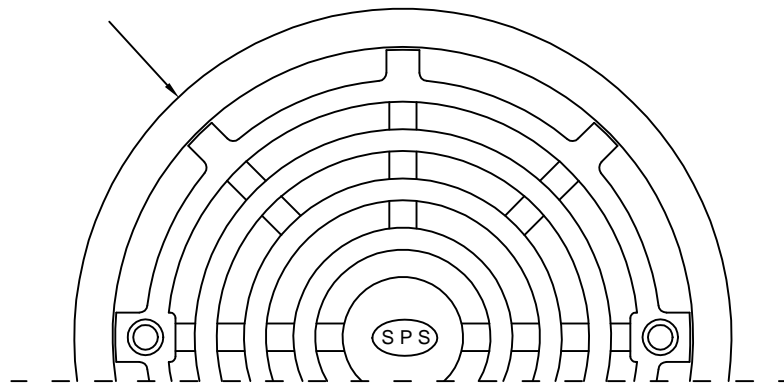


# SPS 100mm 90° uPVC Truflo RWO with Flat Grate & Membrane Clamp

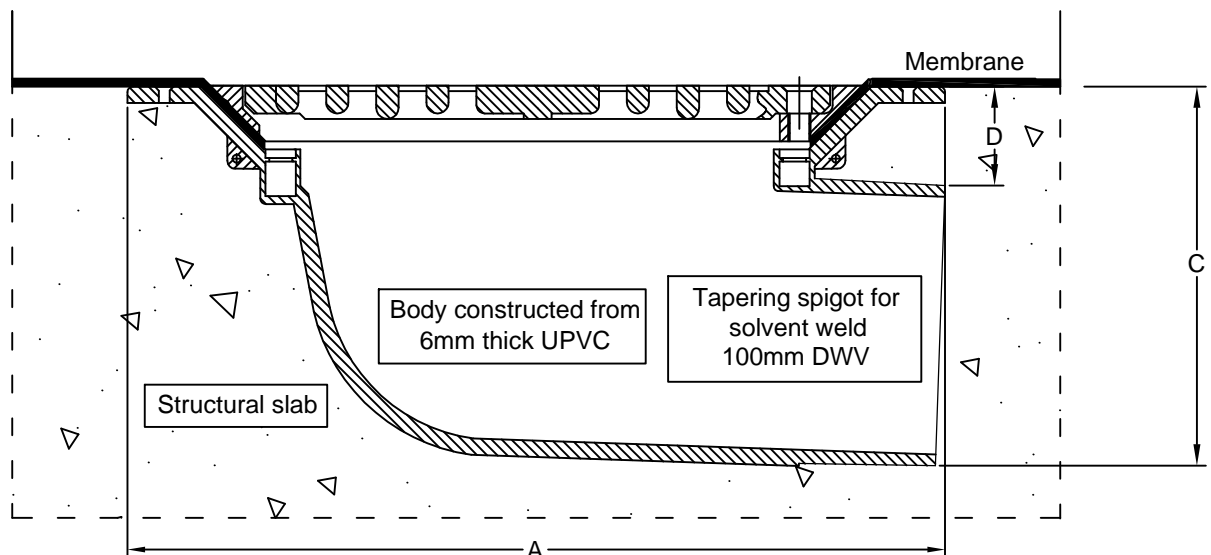
Specification code:

TPA100/90F2 (100mm uPVC body with flat grate & membrane clamp)

Membrane ring fastens to body independently of grate to allow access to sump without breaking membrane seal.



Load Class A - AS 3996-2006



N.B	A	B	C	D
100	300	240	140	33

**Speciality Plumbing Supplies Pty Ltd**

Tel: (02) 9417 1900 Fax: (02) 9417 0108 E-mail: [info@spsdrains.com.au](mailto:info@spsdrains.com.au)