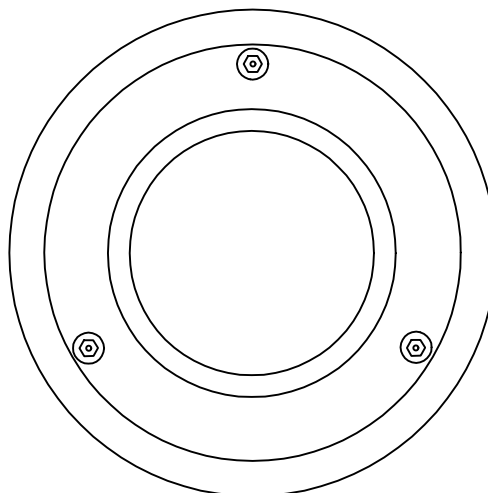


# SPS 100x65/50mm "ACR" "Ultra Compact" Floor Waste - "Anyfloor" Design - Vari-level

## Specification code:

AF100SSA-ACR4/C90 (Satin 304 stainless steel)

Includes Q165/90Y 65/50mm CI side outlet lower body

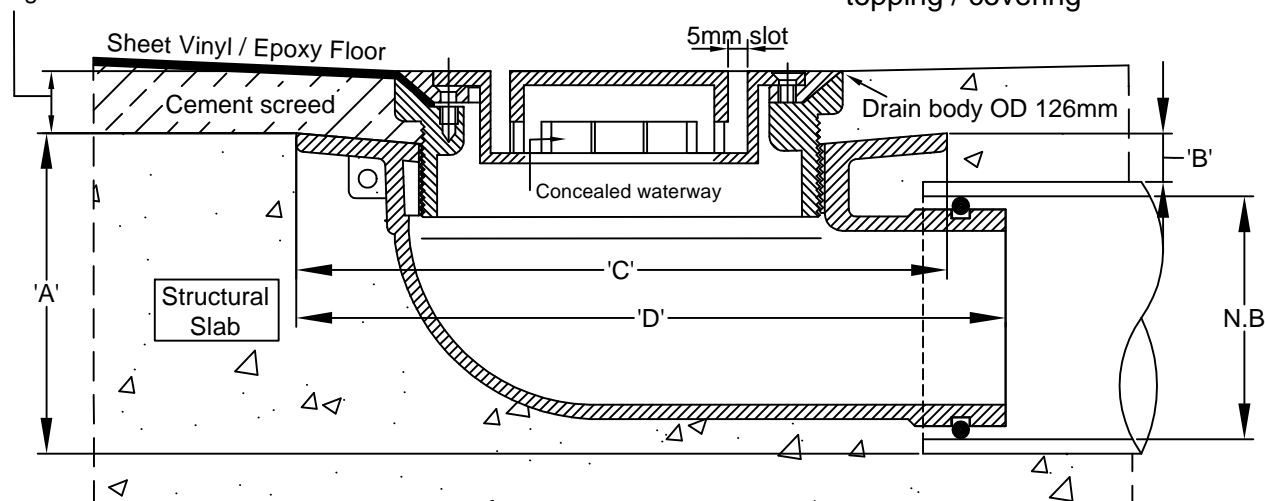


- Heavy-duty, long-lasting all 304 stainless steel floor waste assembly.
- "Anyfloor" drain body designed to have the same appearance once installed, regardless of whether or not any floor covering is used.
- Clamping system suitable for sheet vinyl or epoxy.
- High security "Anti-Crocodile-Roll" features, including concealed waterway and no anchor points.
- Several types of security screw are available, including "torx" style and "snake-eye" style.
- Q165/90Y cast iron side outlet lower body connects to 65mm and 50mm pipe.

## Typical Applications

### 1. With screed & floor covering

Min. height 18mm



### 2. Bare slab with no topping / covering

Spigot pushes into 65mm PVC or copper with o-ring connection, or connects to 50mm PVC/HDPE with no-hub coupling.

## Dimensions (mm)

N.B.	A	B	C	D
50	95	18	180	200
65	100	15	180	200

**Speciality Plumbing Supplies Pty Ltd**

Tel: (02) 9417 1900 Fax: (02) 9417 0108 E-mail: [info@spsdrains.com.au](mailto:info@spsdrains.com.au)