

SPS Truflo 80, 100 & 150mm RWO with Flat Grate & Membrane Clamp

Specification codes:

TIA100F2 (CI body, aluminium flat grate & membrane ring)

TIS100F2 (CI body, 316 S/S flat grate & membrane ring)

TSA100F2 (all-316 S/S assembly)

TIB100F2 (CI body, bronze flat grate & membrane ring)

TBA100F2 (all-bronze assembly)

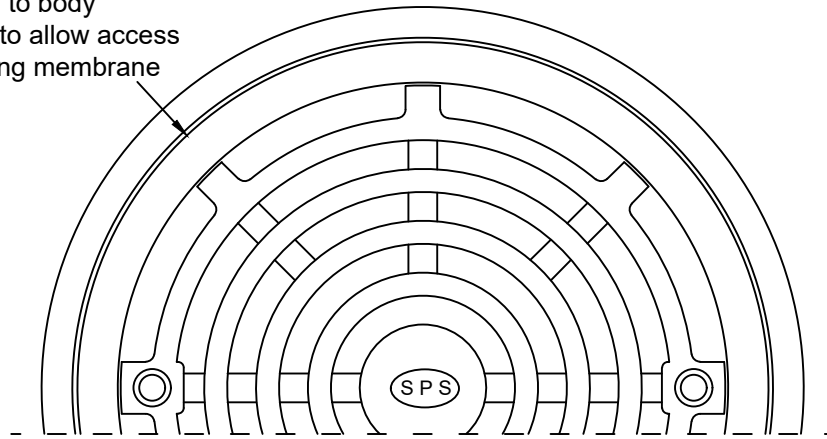
- for 80mm outlet, use "100/80" instead of "100"

- for 150mm outlet, use "150" instead of "100"

Suggested application:

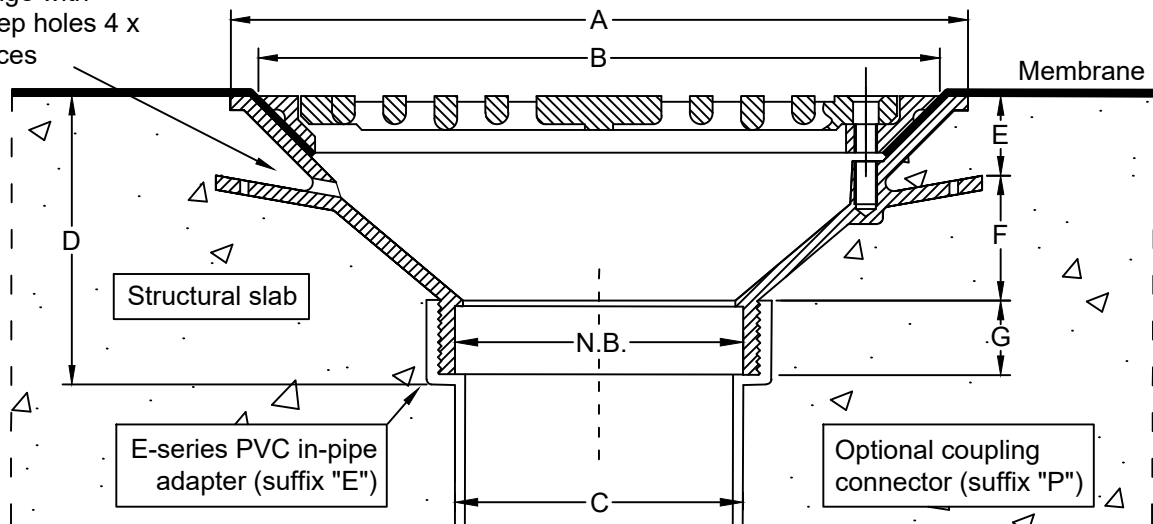
Membraned floors or roofs with no further topping, eg planter boxes, plant rooms, roof decks.

Membrane ring fastens to body independently of grate to allow access to sump without breaking membrane seal.



Load Class A - AS 3996-2006

Integral puddle flange with weep holes 4 x places



Dimensions (mm)

N.B	A	B	C	D	E	F	G
80	260	240	82	106	28	45	25
100	260	240	103	106	28	45	25
150	260	240	151	86	28	37	25

*For flow rate data please refer to appendix.

Speciality Plumbing Supplies Pty Ltd

Tel: (02) 9417 1900 Fax: (02) 9417 0108 E-mail: info@spsdrains.com.au