

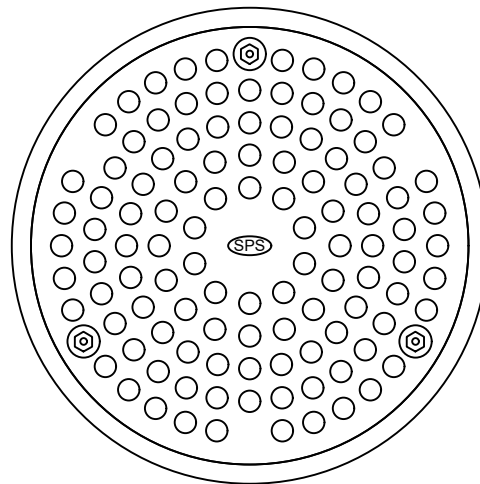
SPS 130mm Round Prison / Safe Cell Drain (Vari-Level)

Specification codes:

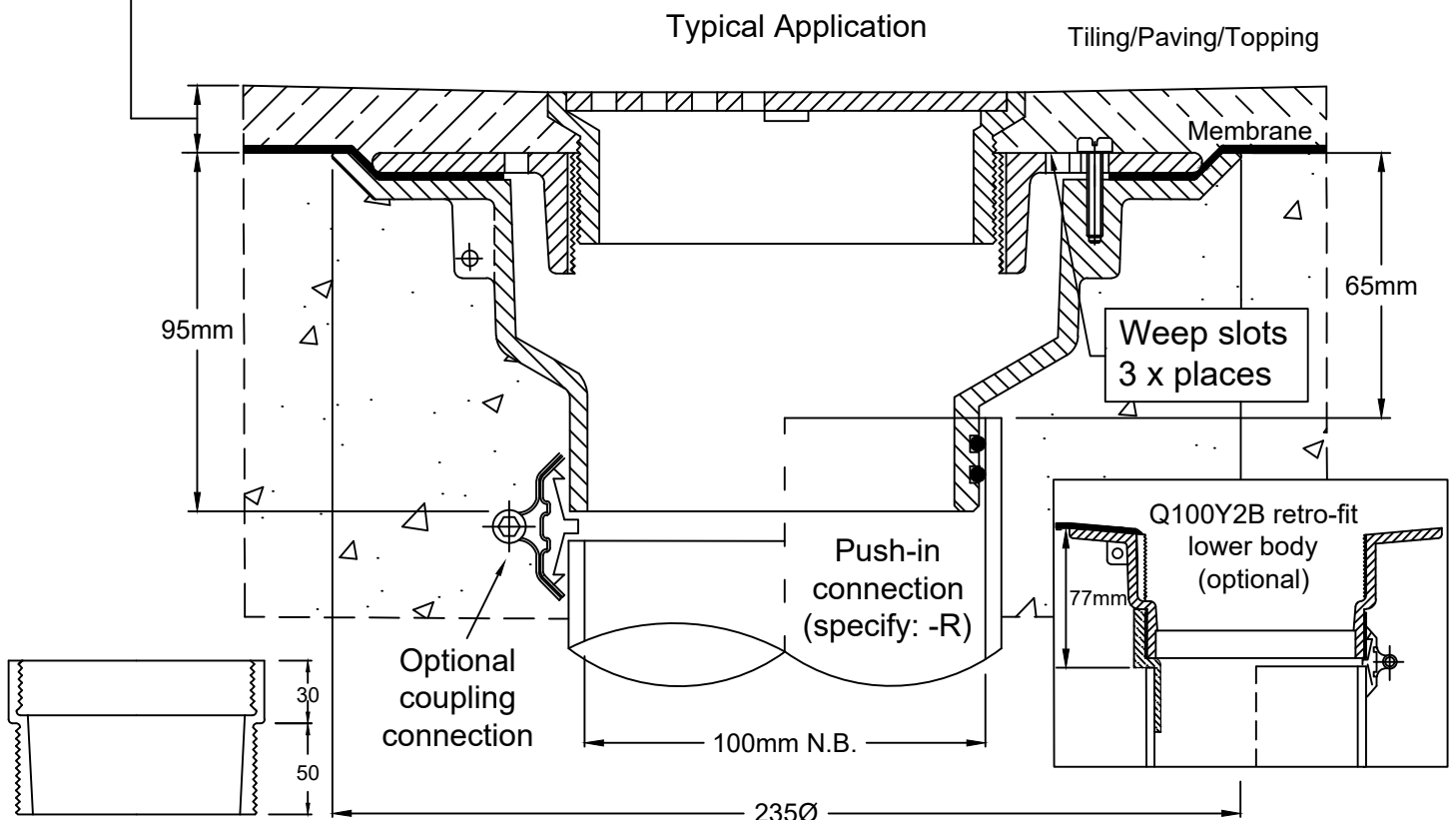
- R130SH4/E (304SS grate with PVC adapter *not shown*)
- R130SH/Q (304SS grate, Q100Y2B retro-fit lower body)
- R130SH/C (304SS grate, C100A CI "deluxe" lower body)

- Floor waste includes security screws and 6mm holes for improved tamper-resistance.
- Grate assembly available in 304 stainless steel. 316SS available by special request.
- C100A CI "deluxe" lower body with reversible clamp collar (pictured).
- Optional Q100Y2B CI retro-fit lower body fits inside 150mmØ core hole.

130mm round grate with 6mm holes and temper-resistant screws



Height adjustment:
Min. 20mm
Max. 50mm**



**Optional Extension Piece

Speciality Plumbing Supplies Pty Ltd

Tel: (02) 9417 1900 Fax: (02) 9417 0108 E-mail: info@spsdrains.com.au